

PART OF THE NE.1/4, OF THE NE.1/4, OF SEC. 28, T.6N., R.1W., S.L.B. & M.

4

VALLEY VIEW ADDITION

BLOCKS 1 & 2

IN OGDEN CITY
SCALE 1" = 50'

TAXING UNIT: 25

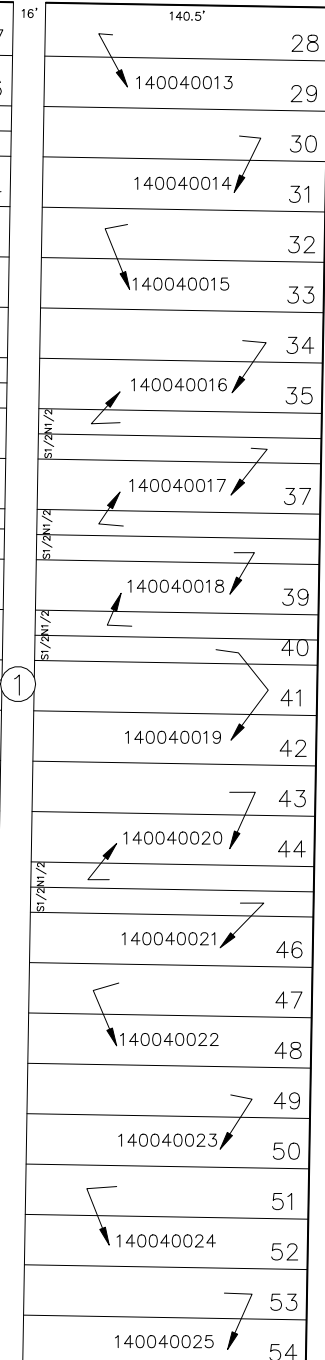
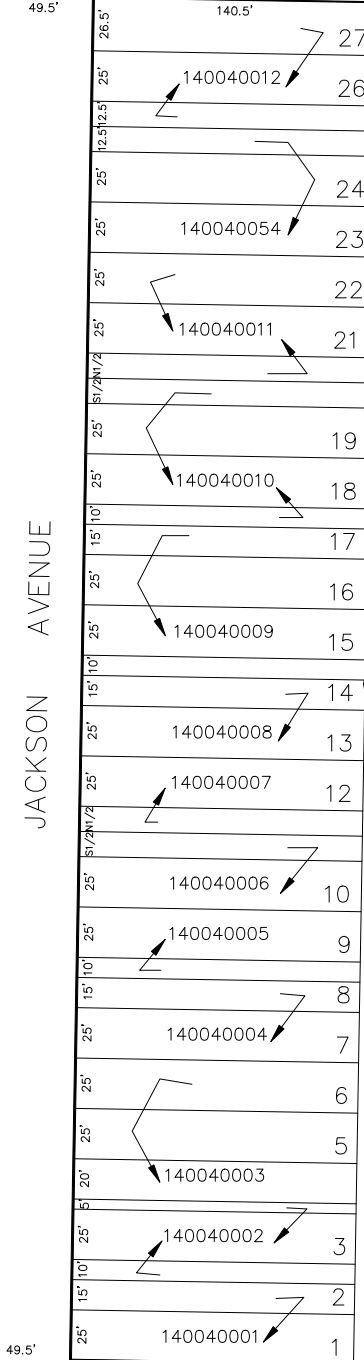
19TH STREET

SEE PAGE 3

SEE BOOK 2, PAGE 46

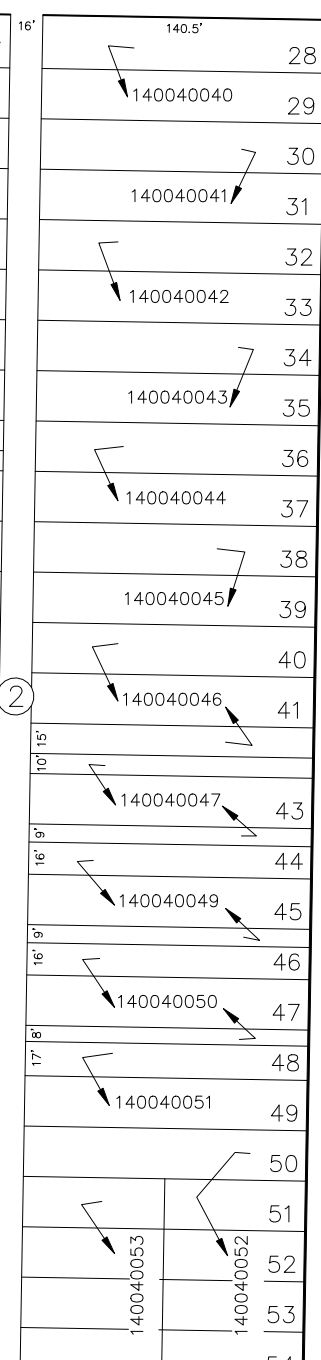
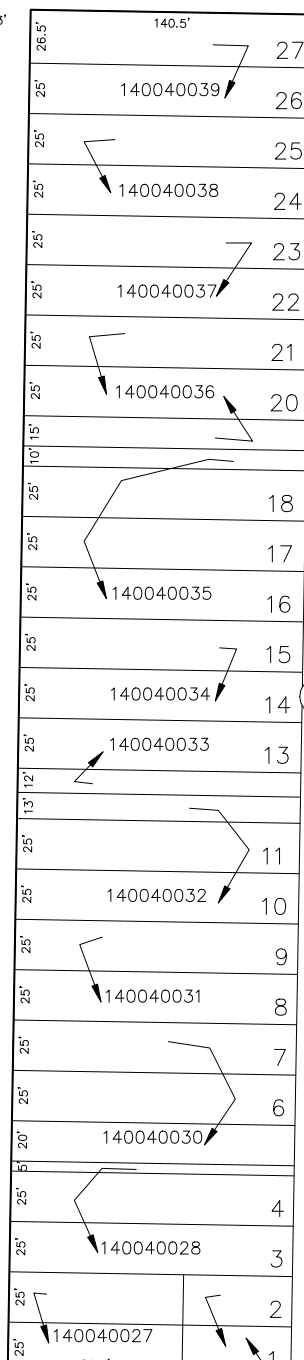
N 0°58' E

JACKSON AVENUE



N 0°58' E

ECCLES AVENUE



49.5'

VAN BUREN AVENUE

N 0°58' E

SEE PAGE 2

20TH STREET

FOR COMPLETE ENG DATA SEE
ORIGINAL DEDICATION PLAT IN
BOOK 5, PAGE 44 OF RECORDS.

140040026

S 89°02' E

SEE PAGE 5

JPS 5-94